



**TMS**  
**TIRE MONITOR SYSTEM**

Designed for large off-road vehicles

Accurately monitor tire pressure and temperature while vehicles are in service and keep your tires running at optimum performance.

**Mining & Construction**

**Tire Testing & R&D**

**Earthmover**

**Container & Cargo Handling Equipment**

**Transit Systems**



- Reduce tire maintenance cost
- Increase productivity
- Improve fuel efficiency
- Extend tire life
- Avoid vehicle down-time

- Monitors and displays actual tire pressure
- Configurable alarms
- Connects to vehicle network
- Logged data



**Robust**



Battery-powered TMS sensors inside or outside each tire transmit pressure and temperature data to a TMS receiver on the vehicle which decodes the data.

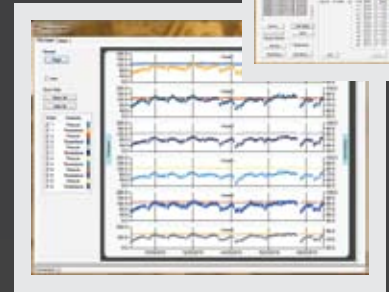
**Accurate**



Connecting the TMS Operator Interface displays tire pressure and alerts when any alarm condition is activated. It is configurable for up to 6 wheels, and the unit has a real-time log feature.

Alternatively the receiver can be connected directly into the vehicle network.

**Reliable**



The system components are configured and alarm thresholds set via TMS Manager, a Windows application. Logged data can also be downloaded or viewed in real time.

[www.tiremonitorsystem.com](http://www.tiremonitorsystem.com)

Tire Monitor System could help lower vehicle maintenance costs by alerting drivers and site managers to improper air pressure in tires. Improper air pressure accelerates tire wear, reduces fuel efficiency and can cause tires to fail.

**Distributed by:**

**Designed and Manufactured by:**

A M Bromley Limited, West Road House, 26a West Road,  
Buxton, Derbyshire, SK17 6HF United Kingdom  
Tel: +44 (0)1298 77166 Email: [Enquiry@ambromley.co.uk](mailto:Enquiry@ambromley.co.uk)